

Small and special

TRANSVER Straight Conveyor mini TM

Description of function

The TRANSVER Straight Conveyor has a modular structure and is assembled according to your individual requirements. End rollers with a diameter of 14 mm gently convey even the smallest products over the belt transition points (Option: Knife edge 6 mm diameter).

Thanks to its compact dimensions, this mini straight conveyor is ideal for use in extremely restricted space is available. It can be used as an extension to a curved conveyor, or as gap-filler e. g. at the infeed of a packaging machine.

The Straight Conveyor TM can be combined with all other TRANSVER equipment.

Areas of application

Can be used for a variety of purposes in both the food and non-food industries to provide reliable transportation.

Examples include:

- Chocolate, biscuits, confectionery
- Frozen food
- Washing products/detergent industry
- Chemicals/pharmaceuticals/cosmetics
- Mechanical industry

Technical data

Belt speed	up to 80 m/min
Conveyor load	up to 8 kg/m ²
Noise level	depending on dimensions

Performance data may vary according to application

Specifications

Belt drive

The geared motor and the rubberised drive roller are secured on the side plate as the drive unit. By adjusting the deflector roller, this conveyor belt can be tensioned without changing the length of the belt.

Conveyor belt

- Coated 1-layer polyester fabric
- Endless welded
- Compatible with foodstuffs (FDA/HACCP)
- Changing a belt requires approximately 15 minutes (excluding built-on components)

Supports

- With connections to TRANSVER products
- With supports for floor mounting
- Fixed (adjustable ± 30 mm)

Safety

- CE manufacturer declaration

Finish

- Standard: Aluminium untreated/Stainless steel
- Stainless: Aluminium hard anodized/Stainless steel/
Bearings sealed

Your benefits

Good price-performance ratio thanks to

- Simple installation
- Low maintenance charges
- Short design

High productivity thanks to

- High reliability because of sturdy design, proved for multishift operation
- Low maintenance requested
- Precise belt tracking
- Very compact dimensions
- Fast and easy belt changing

Handling of small, fragile products thanks to

- Adjustable end rollers
- End rollers with 14 mm / 10 mm diameter and knife edge
- Precise belt tracking

Mechanical options

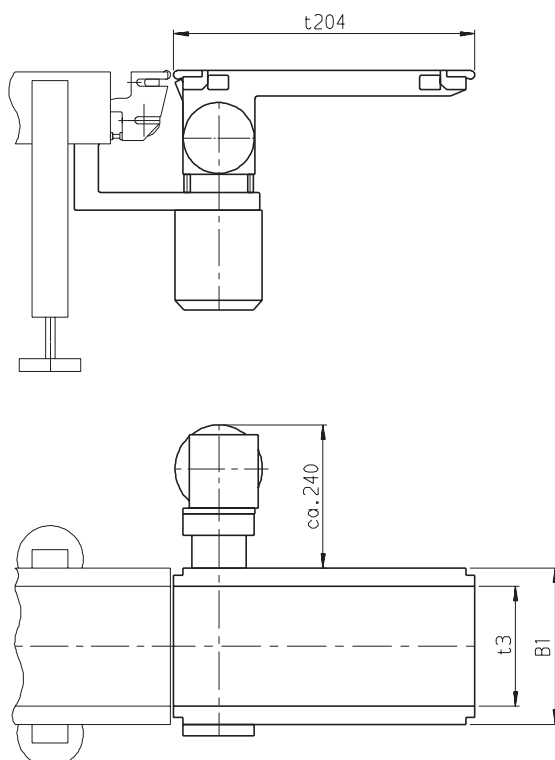
- Belt and roller scrapers
- Catch tray
- Knife edge radius 3 mm
- Conveyor connections
- Supports for floor mounting
- Additional safety guard
- Guides *
- Alignment bar *
- Trunking
- Different belt qualities on customer specifications
- Further options on request

*See separate leaflet

Electrical options

- Servo motor for belt drive
- Metal detector
- Disconnecter
- Increment transmitter
- Emergency stop
- Further options on request

Dimensions [mm]



Conveyor length t204

200 to 1000 mm

Belt width t3

100 to 400 mm

in 50 mm Schritten

Total width B1

t3 + 60 mm

Assembly angle

depending on products and belt surface

Other dimensions on request