



The curved conveyor for the universal use

TRANSVER Belt Bend KC

Functions

The TRANSVER type KC belt bend is built in stainless steel and provides numerous options. It therefore fits perfectly for applications in the food as well as in the non-food industry. With belt widths from 200 to 2'500 mm, with inner radius as small as 330 mm and with a construction height of only 144 mm, that belt bend can be optimally adapted to all space conditions. The use of small, cylindrical end rollers or knife edges allows gentle and precise transportation of even smallest products. In spite of this, the KC curved conveyor accepts loads of up to 100 kg. The chain driven belt guarantees a slip-free start-stop even with heaviest loads. A simple belt change towards the center is another feature of the curved conveyor type KC.

Fields of application

Safe transportation of goods in the food and non-food sectors. Versatile operation e.g. with:

- Chocolate, biscuits, pastries
- Frozen products
- Paper and printing industry
- Detergent industry
- Chemical, pharmaceutical, cosmetics
- Mechanical industry

Technical specification

Belt speed	up to 150 m/min at outer radius
Belt load	up to 100 kg
Noise level	depending on dimension and speed

The performance data may vary depending on application and dimension.

Standard specifications

Belt drive

The belt is pulled respectively pushed by carrier loops along a curved chain. The motor can be attached at either inlet or outlet of the curve and drives the deflection chain via a drive shaft. This design ensures a slip-free drive clockwise or counterclockwise. The drive is mounted on the outlet side of the belt but can be moved to the opposite side in case you wish to change the direction of the belt at a later stage.

Conveyor belt

- Belt quality specific to application
- Welded endlessly
- Food-safe (FDA/HACCP)

End rollers

- Cylindrical end rollers Ø 14 mm (standard)

Support

- With supports for floor mounting
- Fix (adjustable ± 30 mm)

Security

- CE-compliant

Execution

- Stainless steel

Drive

- Lubricant USDA-H1 food grade
- Protection type IP54

Automatic chain lubrication

- Lubricant USDA-H1 food grade

Benefits

Good value for money

- High flexibility with respect to customized dimensions (angle, radii) thanks to simple, modular design
- Minimum space requirement through low construction height
- Quick installation and commissioning
- Low maintenance cost

High productivity

- High availability thanks to a robust construction proven in multiple shifts
- Slip-free drive through use of a deflection chain and carrier loops
- Maintenance-friendly design

Gentle handling

- Gentle transportation of even small, fragile products thanks to very small belt crossings with cylindrical deflection rollers of $\varnothing 14$ mm
- Change of belt direction assured by remounting the drive on the opposite side

Mechanical options

- End rollers $\varnothing 10$ mm (v max. = 80 m/min)
- Knife edge, radius 3 mm (up to belt width = 900 mm / v max. = 30 m/min)
- Mobile base structure
- Prepared for ceiling suspension
- Debris tray
- Conveyor connectors
- Side guides
- Cable duct

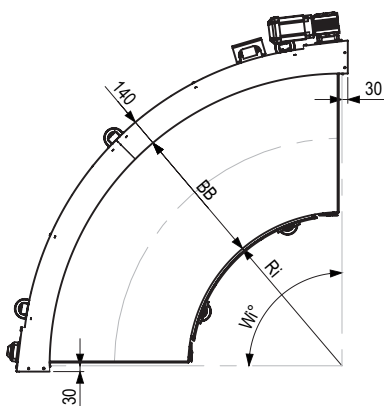
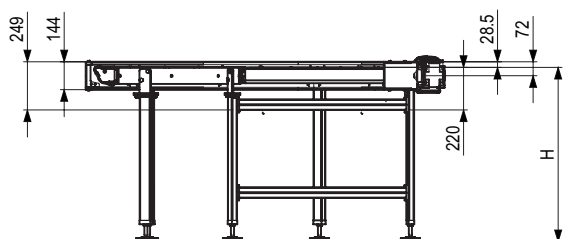
Further options on request.

Electrical options

- Customer specific drives
- Frequency converter
- Maintenance switch

Further options on request.

Dimensions



Inner belt radius Ri

- At 180° from belt width 400 to 900 mm, also available without inner radius
- Optimal operating conditions when $Ri \geq BB$

Usable belt width BB

- 200 to 2'500 mm in steps of 50 mm
- 50 mm larger than the belt widths of the adjacent conveyors

Curve angle Wi°

- 30° to 270° freely selectable

Transportation height H

- 400 to 1'500 mm

Running direction

- Clockwise
- Counterclockwise

Preferred dimensions

BB	300	400	600	1400	1700
Wi°	90°	90°	90°	90°	90°
Ri	604	601	1201	862	1508

Further options on request.